

**Snapshot 2000-2010 and 2011**  
Presbytery of Susquehanna Valley

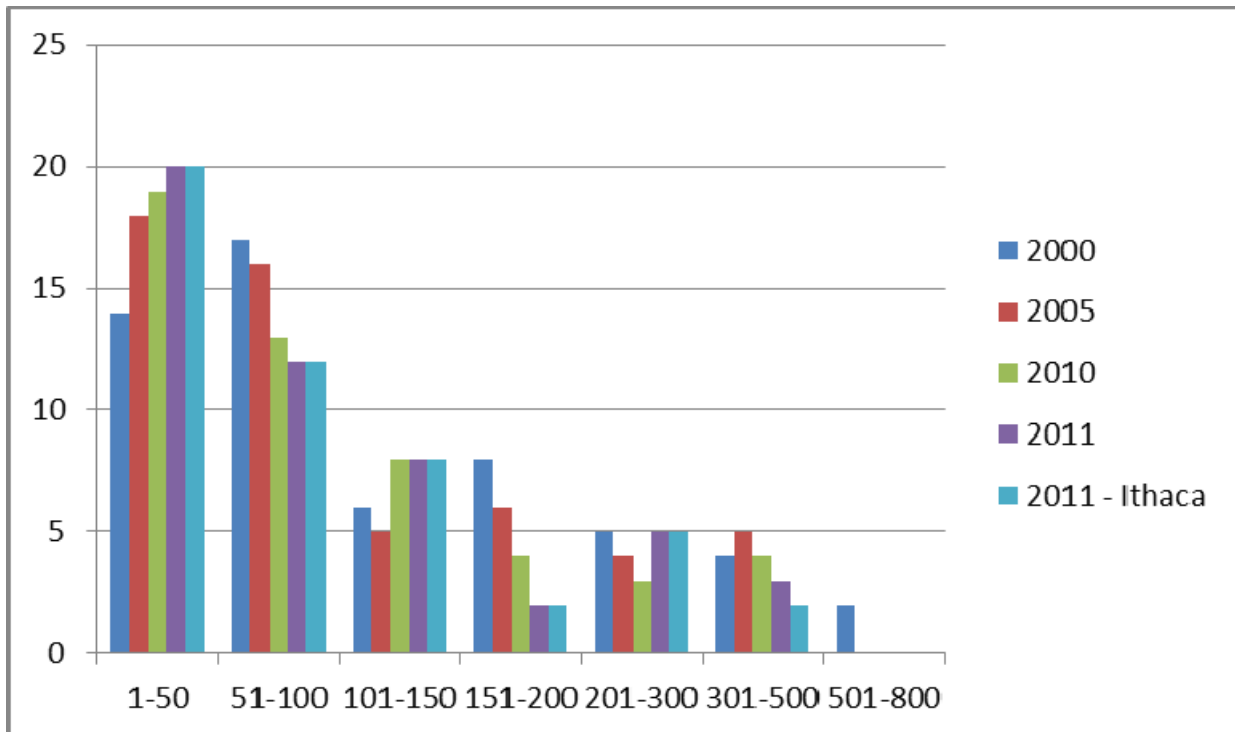
	<b>2000</b>	<b>2005</b>	<b>2010</b>	<b>2011</b>	<b>w/o Ithaca</b>
<b>Churches</b>	56	54	51	50	49
<b>Membership</b>	7,741	6,458	5,286	5,123	4,729

**Size of Churches 2000-2010**  
Presbytery of Susquehanna Valley

<b>Membership</b>	<b>2000</b>	<b>2005</b>	<b>2010</b>	<b>2011</b>	<b>w/o Ithaca</b>
1-50	14	18	19	20	20
51-100	17	16	13	12	12
101-150	6	5	8	8	8
151-200	8	6	4	2	2
201-300	5	4	3	5	5
301-500	4	5	4	3	2
501-800	2	0	0	0	0
801+	0	0	0	0	0
<b>TOTAL</b>	<b>56</b>	<b>54</b>	<b>51</b>	<b>50</b>	<b>49</b>

Note: Not all churches reported membership; OGA (Office of the General Assembly) uses last reported numbers for membership. In 2010, 49 of 51 reported.

**Size of Churches 2000-2010 and 2011**  
Presbytery of Susquehanna Valley



## Worship Attendance in Churches, 2000-2010 and 2011

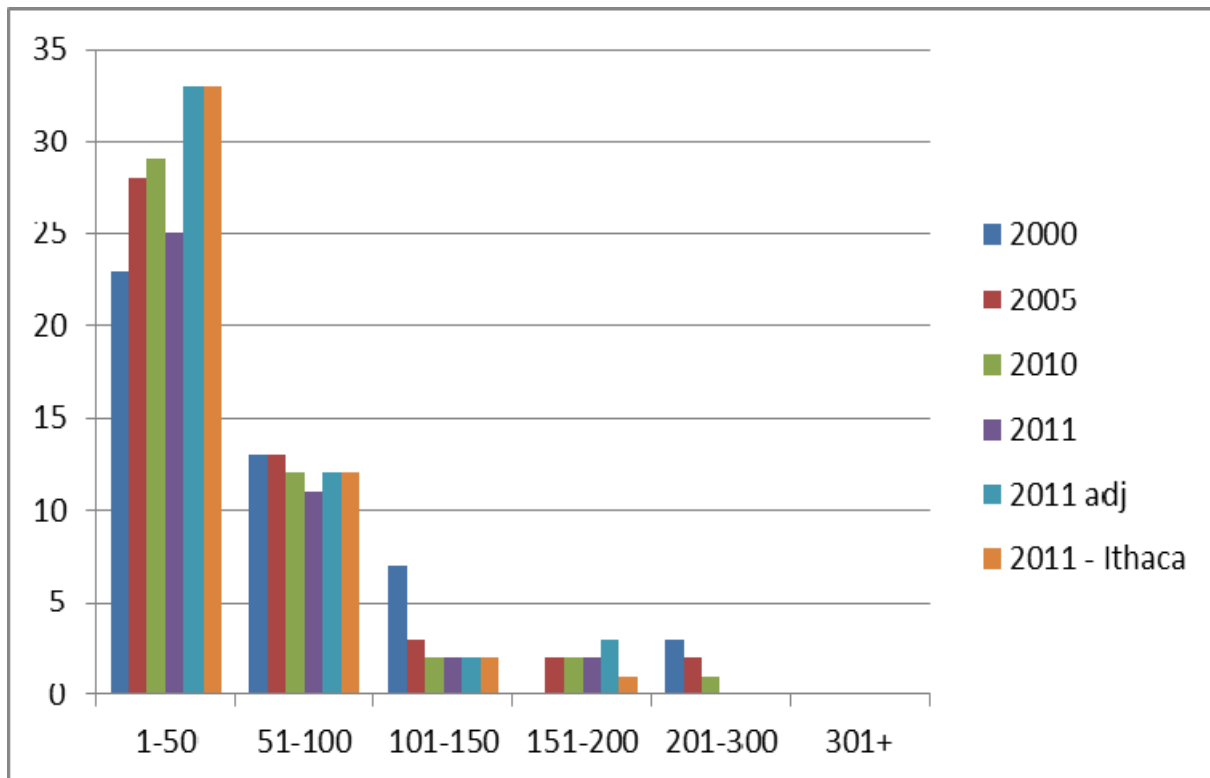
Presbytery of Susquehanna Valley

Attendance	2000	2005	2010	2011	adjusted 2011	adjusted and w/o Ithaca 2011
1-50	23	28	29	25	33	33
51-100	13	13	12	11	12	12
101-150	7	3	2	2	2	2
151-200	0	2	2	2	3	2
201-300	3	2	1	0	0	0
301+	0	0	0	0	0	0
TOTAL for Churches Reporting	46	48	46	40	adjusted	adjusted
Total churches	56	54	51	50	50	49
<b>Churches not reporting</b>	<b>10</b>	<b>6</b>	<b>5</b>	<b>10</b>	-	-

Note: Not all churches reported average worship attendance; OGA (Office of the General Assembly) leaves a blank when churches fail to report. In 2010, 46 of 51 reported. In 2011, 40 of 50 reported. The “adjusted 2011” column includes estimated worship attendance for those ten non-reporting churches based on statistics from 2000-2010.

## Worship Attendance in Churches, 2000-2010 and 2011

Presbytery of Susquehanna Valley



## Membership and Average Worship Attendance 2000-2010

Presbytery of Susquehanna Valley

	2005		2010		2011			2011 w/o Ithaca		
	M	AW	M	AW	M	AW	AW adj	M	AW	AW adj
1-60	22	28	24	30	26	28	35	26	28	35
61-130	13	12	13	13	10	10	11	11	10	11
131-200	10	4	7	3	6	2	4	6	1	3
200+	9	2	7		8			7		
<b>TOTAL</b>	<b>54</b>	<b>46</b>	<b>51</b>	<b>46</b>	<b>50</b>	<b>40</b>	<b>50</b>	<b>49</b>	<b>39</b>	<b>49</b>

Key: M = Membership; AW = Average Worship Attendance

Note: Detailed church by church data need to create these groupings was not readily available for 2000.

### Average Worship

Family Church	1-60
Pastoral Church	61-130
Program Church	131-200
Corporate Church	200+

The 2011 statistics show that a full 2/3 (35 of 50; 35 of 49 without Ithaca) of the churches in the Presbytery of Susquehanna Valley are family-sized churches.

The Office of the General Assembly has continued to group churches by size according to the patterns above. More recent thinking pegs the range of family-size churches as having 1-60 in worship (instead of 1-50). By that measurement, 35 of the churches in this Presbytery are family-size churches.

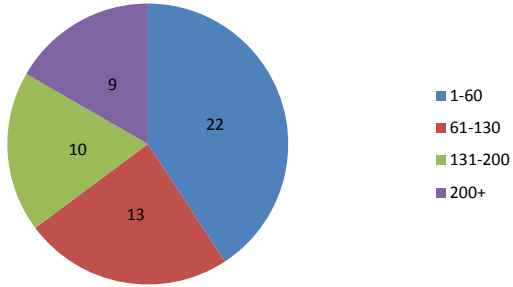
**Small “Family-size” churches** (up to 60 in average worship attendance) tend to resemble extended families and focus on relationships. People matter more than performance. High value is placed on volunteering, rather than on professional skills one may possess for the work that needs to be done. Members may be reluctant to hand over too much authority to the minister. The perception of the minister’s job is to love the members. Ministers need interpersonal skills more than academic credentials or leadership qualities. The small-church minister is but one leader among many-and, in many case, may not be the most influential. In fact, many family-sized churches cannot afford more than a part-time pastor, a commissioned ruling elder, or a pulpit supply.

Congregations in **“pastor-driven” congregations** (usually in the 61-to-130 average worship range) tend to hand over more responsibility for care of the congregation to the pastor. The pastor brings proposals to the Session for decision. Most decisions involve the pastor in one way or another. Lay leaders are primarily those who are empowered by or taught by the pastor.

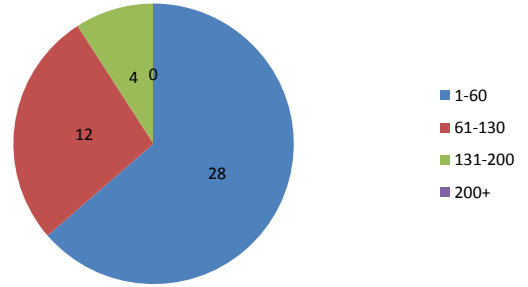
Those who attend **“program-size” churches** (131-to-200 in average worship attendance) seek performance more than relationships. They want quality programs, well-organized activities and professional leaders. Prospective volunteers are expected to be well qualified for a particular task. The incentive structure of the large church discourages lay involvement. The senior minister of a large church needs administrative skills, and strengths in supervision and leadership of both large and small groups. Member care is a lower priority in the larger church. Care happens, but it is delegated to other staff members.

With or without Ithaca, there are no **“corporate-size” churches** in the Presbytery (more than 200 in average worship attendance).

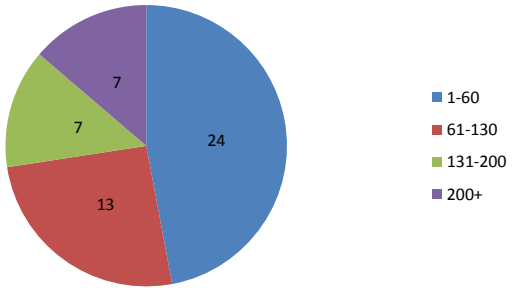
**2005 Members**



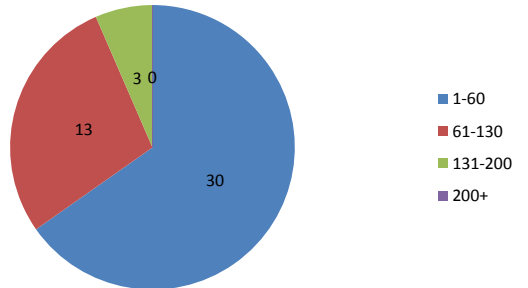
**2005 Avg Worship**



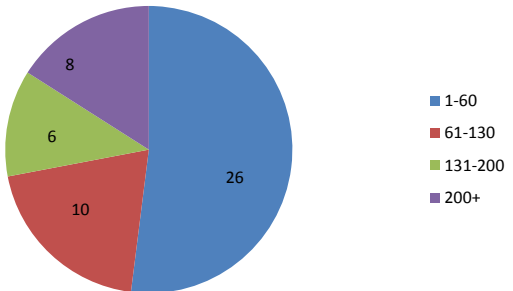
**2010 Members**



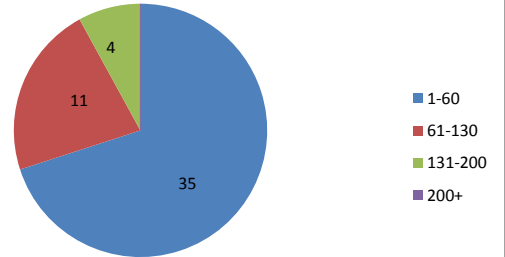
**2010 Avg Worship**



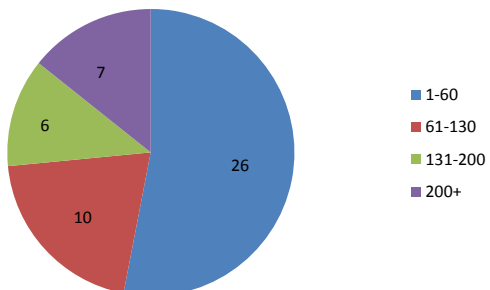
**2011 Members**



**Adjusted 2011 Avg Worship**



**2011 Members without Ithaca**



**Adjusted 2011 Avg Worship without Ithaca**

